

**20th Meeting of States Parties
14 – 18 June, 2010**

Presentation on the workload of the Commission on the Limits of the Continental Shelf (CLCS)

UNCLOS and the Rules of Procedure

- Article 5 of Annex II to UNCLOS:

"Unless the Commission decides otherwise, the Commission shall function by way of sub-commissions, composed of seven members ..."

- In response to outcomes of 16th Meeting of SPLOS (SPLOS/144 and 148) the CLCS decided during the 18th session CLCS (CLCS/52) that:

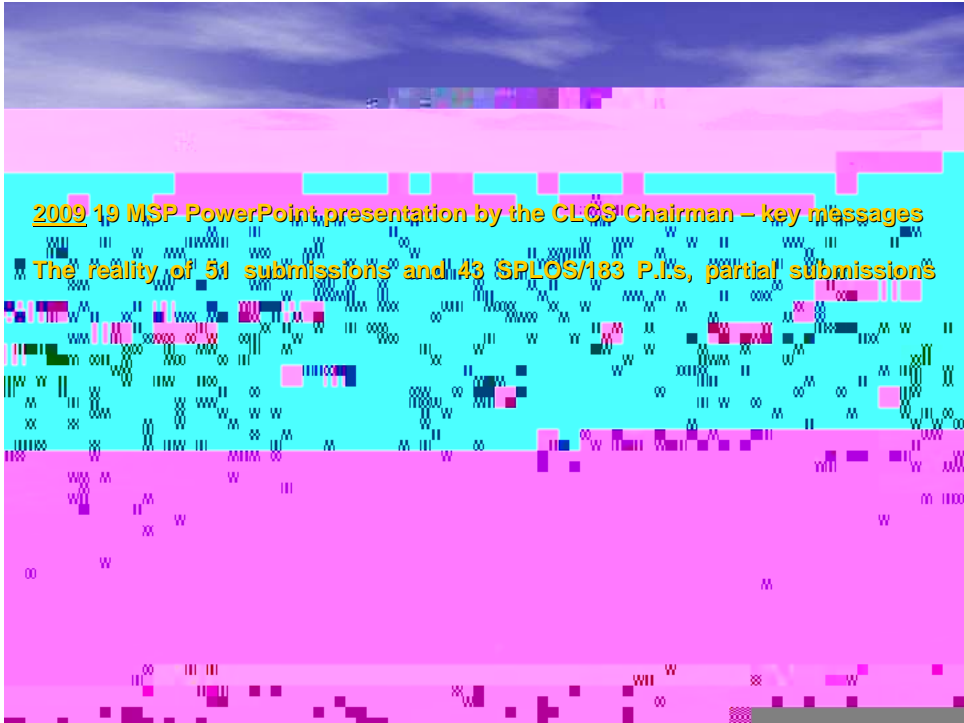
"Only three sub-commissions shall function simultaneously while considering submissions. The submissions shall be queued in the order they are received. The submission next in line shall be taken for consideration by a subcommission only after one of the three working subcommissions presents its recommendations to the Commission."

- Represented a temporary and partial measure; It was subject to review.

Four exceptions

As exceptions, the CLCS has considered necessary and useful to appoint a fourth Subcommission in four consecutive occasions to date:

Subcommission appointed to consider the Submission of Mexico during the 21st



The practical scenario

. 11 recommendations adopted (Russian Federation, Brazil, Australia, Ireland-P, New Zealand, France/Ireland/Spain/UK-J, Norway, France -P, Mexico - P, Barbados and UK-P).

.04 submissions under examination (Indonesia-P, Japan, Mauritius/Seychelles -J and Suriname).

36 Submissions to be considered in the future (Myanmar, France-P, Yemen, UK-P, Ireland-P, Uruguay, Philippines-P, Cook Is-P, Fiji, Argentina, Ghana, Iceland-P, Denmark-P, Pakistan, Norway-P, South Africa-P, FSM/PNG/Solomon Is-J, Malaysia/Viet Nam-J, France/South Africa-J, Kenya, Mauritius-P, Viet Nam-P, Nigeria, Seychelles-P, France P, Palau, Côte D'Ivoire, Sri Lanka, Portugal, UK-P, Tonga, Spain-P, Iridia, Triniđa & Tobago, Namibia and Cuba).

Resolutions of GA (A/RES/64/71)

47. Notes with concern that the heavy workload of the Commission, owing to the considerable number of submissions, places additional demands on and challenges before its members and the secretariat, as provided by the Division, and in that regard emphasizes the need to ensure that the Commission can perform its functions expeditiously, efficiently and effectively and maintain its high level of quality and expertise;



One copy of hard copy of documents
in one large submission

All the original submission materials
contained in the submission over
900 kg of material



Issues that impact the workload of the CLCS

- The date of election of the members of the first CLCS.
- The commencement date for the ten year period of 13 May 1999 (SPLOS/72)
- Preliminary Information (SPLOS/183).
- Informal Working Group, and SPLOS/157 Secretariat update

Short, Medium and Long Term Measures implemented by the CLCS

- **Short Term:**
It has invoked an exception provision contained in Rule 51 4bis in order to create a 4th

Conclusions

- The CLCS has taken every action possible within its current capacity to extend the maximum number of existing subcommissions and its work weeks in NY and home countries.
- Nine years of experience considering submissions indicate that the CLCS operates most effectively when all members are present in New York.
- Without financial support, the most important suggestions made by the Informal Working Group in its letter to the Secretariat dated 15 March 2010 with a view to updating SPLOS/157 could not possibly be implemented.

Thank you