

UN/POP/EGM/2006/07
11 May 2006

E

Distr.
LIMITED
E/ESCWA/SDD/2006/WG.1/5
8 May 2006
ORIGINAL: ARABIC



7-1

:

12-8

:

	2004-96		:(2)
	2004-1975	:	-(2)
1984-80	(2004-75)		:(3)
2004-	? . .	/	:(4)

21.6 2004

_____ :

.1

.2

"

.1994

."

.3

*

.1

GCIM)

.(2005: 26-27

.2005



.8

(W.B.2006:86) t

) : (2)

(3)

	4000
	4000 -3000
	3000-2000
	2000-1000
	1000-500
	500-200
9) (8.7) (5.4)	

1173.1

4973.1

1

.34



()

(.35

(Freud & Spataforta 2005)

1160		1882	-500 550	700	3000	2500	
800		1700	575	960	89	1420	

(Zaka 2004) %22.5 (Wilson Swider 1987)
(Sakka 2004) %60

.41
.2004
%20 %34
. %79 %53 %7 %56 %57
. %80 %60
" " ()
. %54

42 `903 õ=491

:
(Nadim Zaqua, 2004)
%20
%12
%28
%16
%12

:

71.3	:	.48
1430	39.2	
46.9	146.4	139.2
		65.2
		381.1 ¹
		42.1

.49

.2004	%26.2 :	%17.9
	%.9.9	%13.5
	%8.4	2000
%3.4	(%6.4 %4.9)	

:

(4)

)pW(!ñ' €p} ð%F)œ3ò Ó

)
.

3

.

(
.60

.(2002

)

.

Hometown)

%1

23

3

.(Association

.82

¥

%60

(...)

:
-
-
-
-

()

()
()

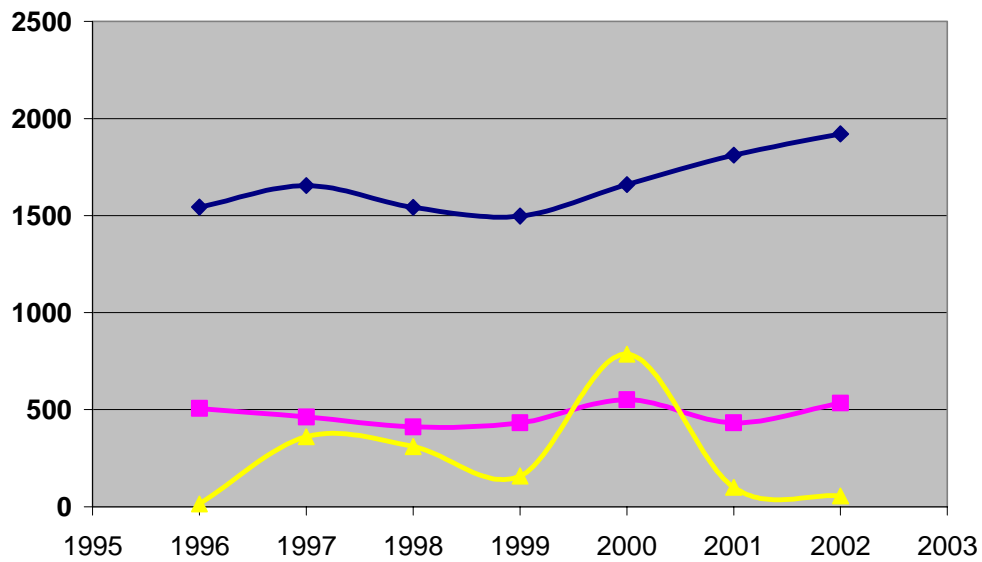
)
()

: (3)
2004 1975
 ()

1128.0	56.4	347.0	1207.0	675.8	418.6	192.0	533.8	1979-1975
1524.0	263.0	487.4	2989.0	939.0	426.2	341.8	1053.6	1984 -
1131.6	286.2	408.6	4261.4	1492.6	376.5	430.0	1055.6	1989 -
1157.0	391.0	567.0	4758.2	1990.4	867.8	577	950.4	1994 -
1182.2	496.7	951.0	3352.3	2001.7	1358.8	724.9	1559.9	1999-1996
1607.3	1239.6	883.0	2904.3	4033.2	1850.0	1368.9	2357.9	2004-2000

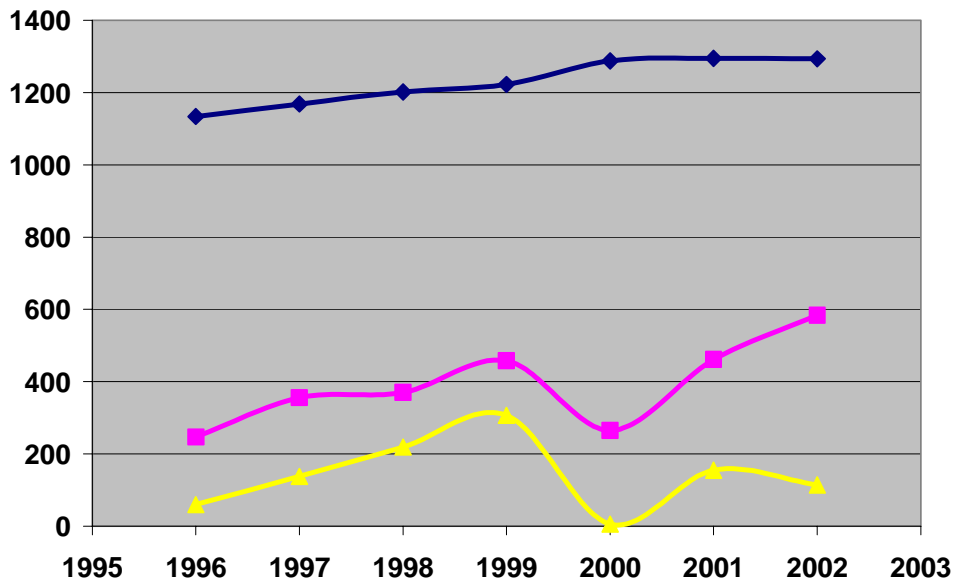
1/E.1461(0 DT)5069 2.46 (5F)

15	507	1544	1996
361	462	1655	1997
310	411	1543	1998
158	432	1498	1999
786	552	1660	2000
100	432	1811	2001
56	534	1921	2002
-	-	1981	2003
-	-	2059	2004



--	--

60	247	1134	1996
138	356	1169	1997
219	370	1202	1998
307	458	1223	1999
6	265	1288	2000
155	461	1295	2001
114	584	1294	2002
-	-	1269	2003
-	-	1283	2004



References

- 1- Abdel-Rahman, A.M. (2003): The determinants of Foreign Worker Remittances in the Kingdom of Saudi Arabia - Dep. Of Economics, King Saoud University.
- 2- Adams, Richard & Page (2003) "International Migration, remittances, and Poverty in Devel. Countries" Policy Research working paper 3179, World Bank.
- 3- Al Sharmani, Mulki (2003), "Livelihood and Identity of Construction of Somali Refugees in Cairo", Ameru.4(54D ()Tj bw ()AL052 Tw5awusit)-9.4(y)109(m)1.2()AL05C6()14(S)13.62 D ()Tj(J1.8(s35.8(-4.9()TJ -3 -0 Tc 0 Tw ()Tj 1.5 -151489 TD (3-)Tj /F4 1 Tf 0.8298 0 TD ()Tj /F1 1 Tf 0.6702 03.14870290

- 19- Glytos, M. (2002): "The Role of migrant remittances in Develop.: evidence from Mediterranean Countries' International Migration, 40/1, pp. 5-26.
- 20- Henry T. Azzam (2004): Daily Start, May 11 at: www.dailysar.com.lb/printable.asp?art_ID=3425&cat_ID=3
- 21- I.M.F. (2006), Balance of payment database and browser.
- 22- I.M.F., Balance of payment manual, fifth edition; Balance of payment statistics different issues.
- 23- I.O.M. (2003): "Cost and Benefits of International Migration" World Migration, Report 2003.
- 24- I.O.M. (2005): "Managing Migration", World Migration, Report 2005.
- 25- ILO(2005): Female Migrants in Arab countries – (2004): Une approche Equitable pour les travailleurs Migrants", Conf. Report VI 2004.
- 26- Kapiszewski, Andrzej (2001): "Nationals and Expatriates Population and Labour Dilemmas of the GCC states", Ithaca Press, Lebanon (2001).
- 27- Kathleen Newland and other (2004): "Beyond Remittances: the Role of diaspora in Poverty Reduction in their countries of origin"- Migration Policy Institute for the Dev. Of inter, july 2004.
- 28- Khawaja, M. (2002): "Internal Migration in Syria, Findings from a National Survey, FOFO Institute for Applied international studies, Report 375.
- 29- Khawaja, M. (2003): "Migration and the Production of Poverty: the Refugee camps in

- 37- Orizco, Manuel (2003): "Worker Remittances, Transnationalisme and development" Inter American Dialogue.
- 38- Orozco, Manuel (2002): "Attracting Remittances: Market Money and reduced cost" report commissioned by Multilateral Dev. Investment Fund of the Inter-American Dev. Bank.
- 39- Patricia Weiss Fagen and Mica (2005): "Remittances in conflicts and crisis: how Remittances sustain livelihoods in war, crises and transmission to peace at www.ipacademy.org/programs/research/progseudev-pub.htm.
- 40- Romeo E. Matsas (2005): "Les Transfers financiers des Travailleurs migrants" Colloque: Les migrants, acteurs transnationaux de dev.- Bruxelles, 27 may 2005.
- 41- Roussand, P.N. (2000): "Jordanie: l'Utilisation de l'Immigration pour stabilizer une economie post rentiere en crise" Revue Tiers Monde no. 163 pp.645-667.
- 42- Russed S.S. (1986): "Remittances from International Migration: A Review in Perspectives", World Dev. Review, vol. 14.
- 43- Testas, A. (2001): "Maghreb-EU Migration: Interdependence, remittances, the labour market and implications for economic Dev." Mediterranean Politics, 6/3, pp. 64/80.
- 44- UNDP (2002): Arab Human Dev. Report 2002.
- 45- United Nation (2004): World Economic and social survey 2004: International Migration, New York.
- 46- World Bank, 2004: World Development indicators acceded 2004. <http://www.worldbank.org/onlinepbs/onlinebases.htm>.
- 47- World Bank, 2005: A better investment climate for everyone.
- 48- World Bank, 2005: Global Economic Prospects 2005.
- 49- World Bank, 2006: Global Economic Prospects 2006, Economic Implications of Remittances and Migration.
- 50- World Bank, 2006: World Foreign Direct Investment. <http://publication.worldbank.org/commerce/catalog/product?itemid=631625>

:()
(2004-75)

2004-00	99-1996	94-1990	89-85	84-1980	79-1975	
9431.64	6239.59	4752	5278	5268	2669	
5475.61	2899.66		2150	1709	960	
			1882.5	2131	2093	
		2835	2043.0	2437	1735	
4958.38	1987.2		1431.0	1315	272	
11617.04	13409.3	23791	21307.0	14945	6035	
16132.83	8007.03	9952	7463.0	4695	3379	
6429.11	4728.7		3675	5471	4697	
			1983	2149	943	

. : 1994 1975 :
: 2004 1996

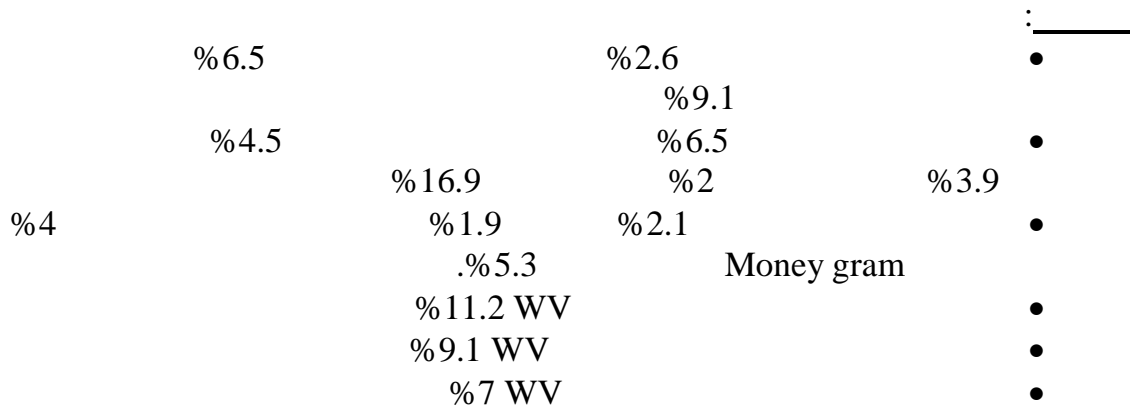
IMF: BOP Statistics data based and browser 2006.

MTO			
2.5-2.2	6.3-1.1	%8.8-%0.8	- .1
8.4-3.1	%2.5	%10-%0.8	- .2
8.4	2.5	%4.2-%0.8	- .3
7.3-7	7.3-1.1	%10-%3.9	- .4
6.5-5.3	2.1-1.5	%9.4-%2.5	- .5
6.5-5.3	2.1-1.5	%9.4-%2.5	- .6
6.5	2.1-1.5	%9.4-%2.5	- .7

(FREMIP-2006)

(1) :

- (1) Table 6.4 p. 62
- (2) Table 7.4 p. 74
- (3) Table 8.4 p. 87
- (4) Table 9.4 p. 98
- (5) Table 10.4 p. 111
- (6) Table 11.4 p. 121
- (7) Table 12.4 p. 131



() :()

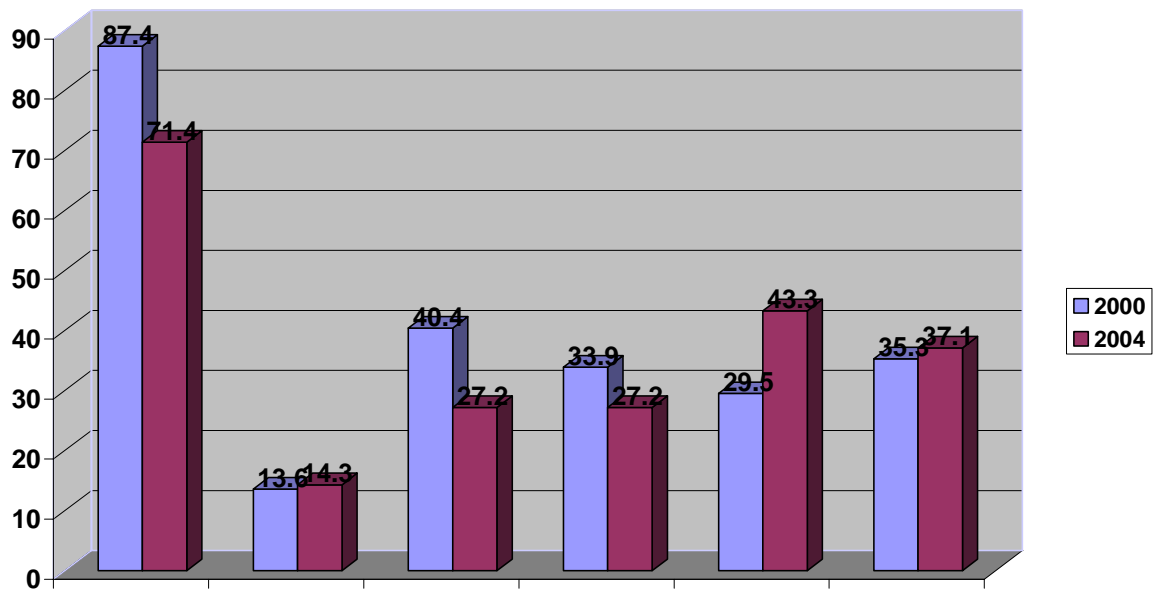
74	56	43	45	-	46	•
16	24	12	13	23	31	•
4	5	18	23	34	16	•
-	5	-	3	2	-	•
6	5	15	5	16	5	•
-	5	12	11	25	2	•

.FREMIP 2006

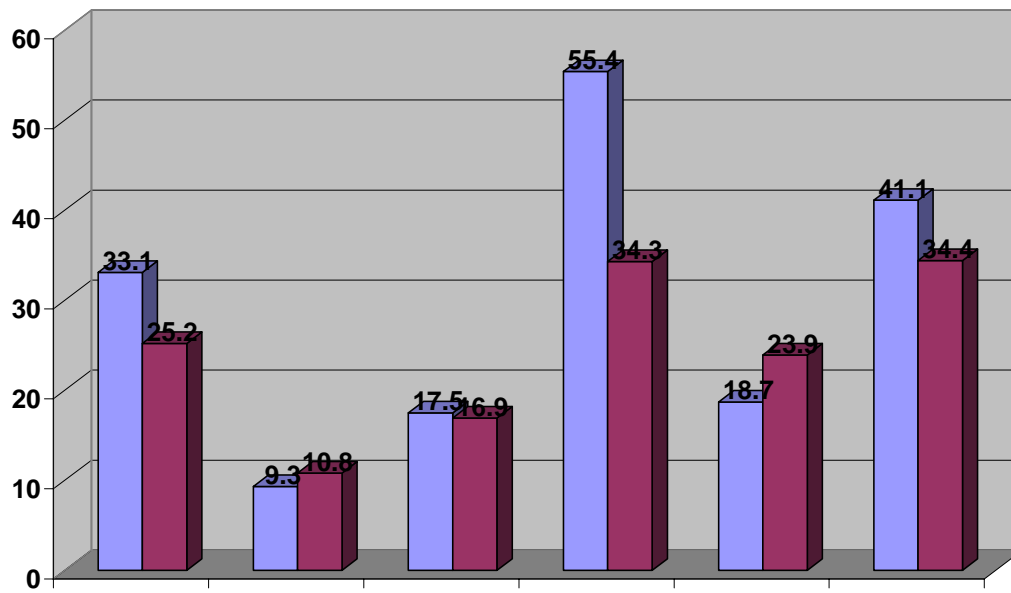
:

()		
2004	2000	
71.4	87.4	
14.3	13.6	
27.2	40.4	
27.2	33.9	
43.3	29.5	
37.1	35.3	

2004 2000) (



	2004	2000
	25.2	33.1
	10.8	9.3
	16.9	17.5
	34.3	55.4
	23.9	18.7
	34.4	41.1



1995

]

.1

%54

.9

.

.10

:
%12

1430

71

.11

R81

