



UN DESA – Economic and Social Council

Commission on Population and Development

Forty-first session
New York / 7-11 April 2008

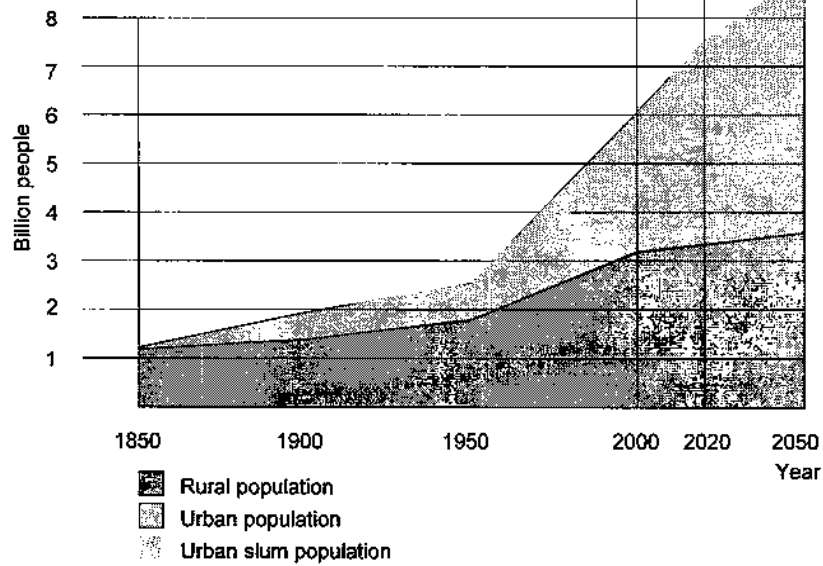
**Population distribution, urbanization, internal
migration and development**

Keynote address by Eduardo López Moreno,
Chief of Global Urban Observatory

UN-HABITAT



Population of The World



Number of slum dwellers in the world: 809,922

Slum proportion in 2005: 37%

REF: UN-HABITAT, Global Urban Observatory



Improving the Lives of Urban Slum Dwellers

Slum Incidence:

Africa 62%

Asia: 39%

Latin America: 27%

North Africa 14.5%

Eastern Asia 38.5%

Central America



The State of the World's Slums

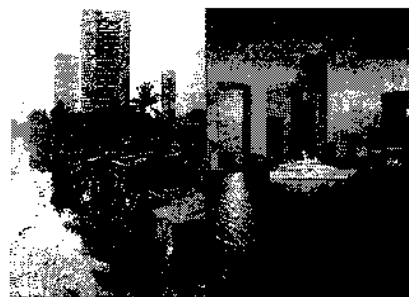
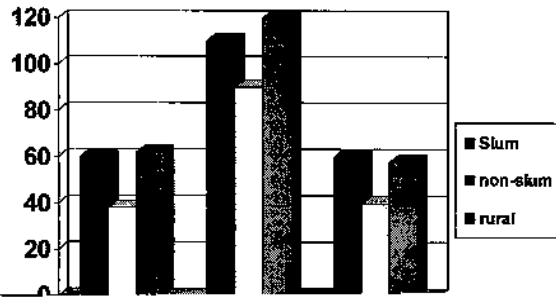
Evolution of slum dwellers in selected countries



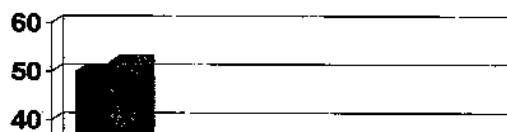
The Divided City



Under-five mortality

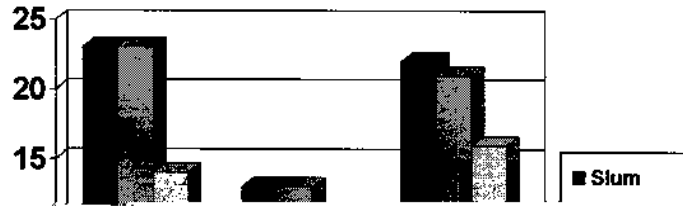


Proportion of underweight children





The Urban Penalty: Respiratory infections



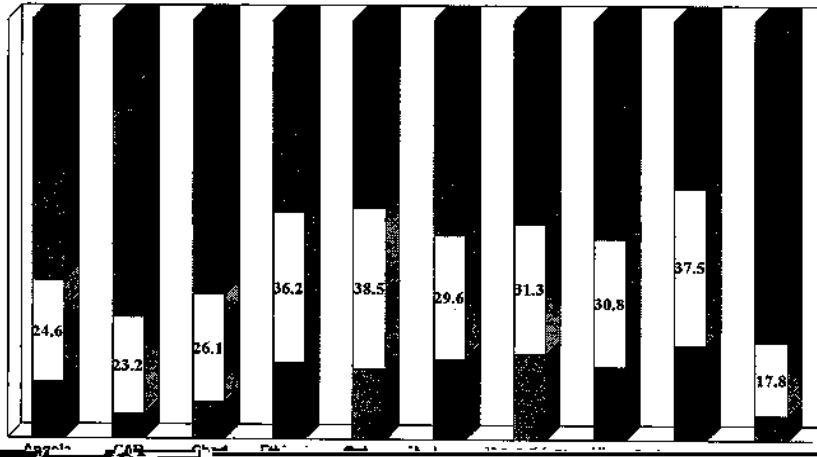


Policies that work: starting with understanding





Countries with high concentration of slums with multiple shelter deprivation, Sub-Saharan Africa





Type of single deprivation per country

