

ᠪᠠᠨᠨᠠ

ᠪᠠᠨᠨᠠ

ᠮᠠ ᠶᠠ ᠮᠠ

ᠪᠠᠨᠨᠠ ᠪᠠᠨᠨᠠ

ᠪᠠᠨᠨᠠ

ᠪᠠᠨᠨᠠ

ᠪᠠᠨᠨᠠ 13





- ~~Statistics 990~~

- ~~Study~~

- ~~Q&A~~

- ~~A~~

- ~~B~~

- ~~Flow~~

- ~~C~~

~~D~~ ~~EU, Denmark~~

~~(SSR)~~

~~R~~ ~~: optional~~

~~A~~

- Western, Northern (Nordic), Southern Europe, “German-speaking” countries

- Central, South-eastern, Eastern Europe (EU regions in blue, except NO, ICE, CH)



990





Estadística  
II

gub

-

---

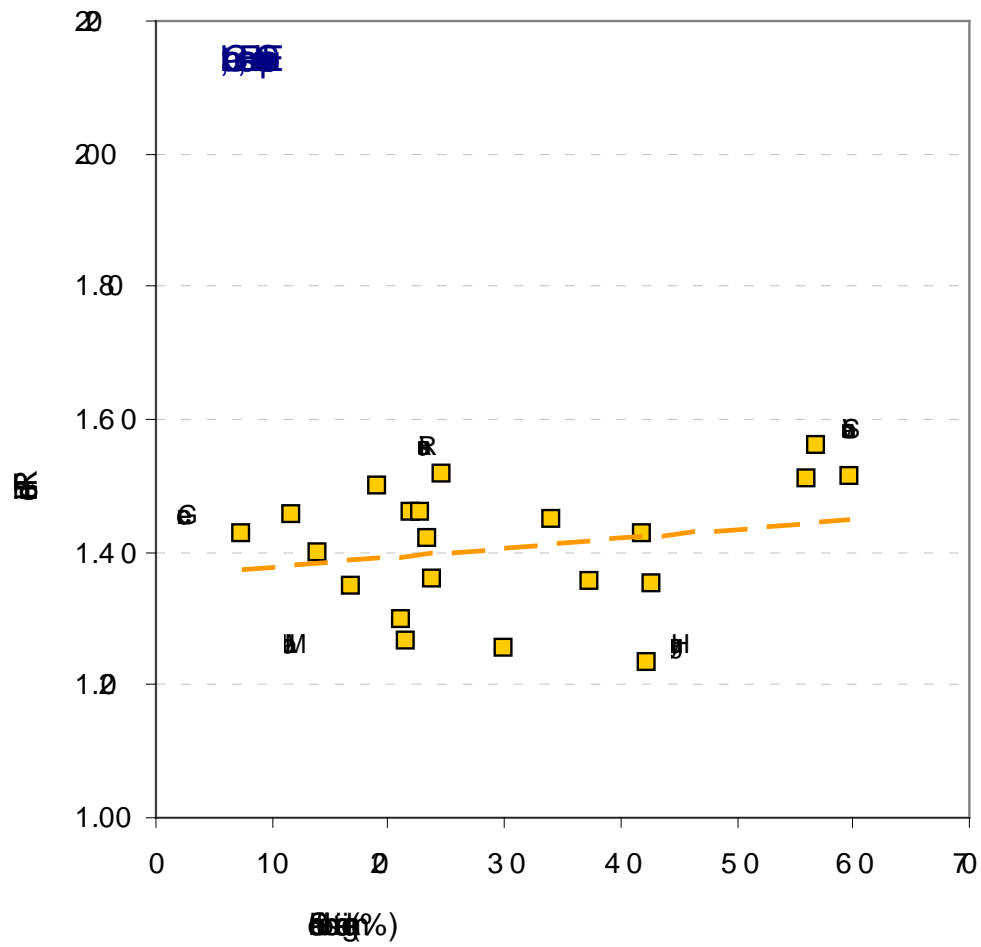
# Frühjahr 2008

---

- ~~Chiffre~~
- ~~Quelle~~
- ~~Rechtliche~~  
~~Einrichtung~~
- ~~IP~~
- ~~g~~ ~~ttige~~ ~~g~~  
~~h~~

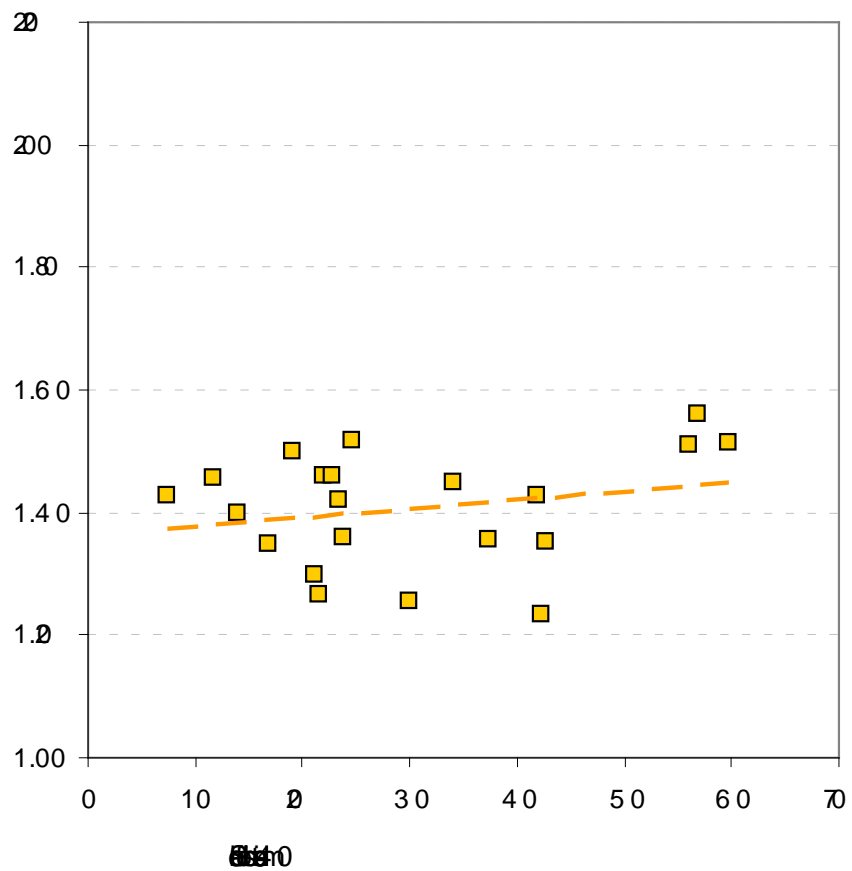


# DI - HTR011





# DI - HTR011



- Tempo effects (1999), postponement transition (2002)
- 'low fertility trap' (2006)
- gender equity (2000, 2013)
- Fertility reversals at advanced levels of development (2009, 2011, 2011)
- Pattern of disadvantage (2004)
- Globalization, unemployment and economic uncertainty (2004)

- (2008, 2008, 2011)



## Analysis

1/4

3/4

1/4

(wasted generation)

3/4

3/4

3/4 -213% 2010% (2011)

011)

The working-age poor are being pinched by a cap on welfare payments. Wealthy parents have been stripped of child benefit. University tuition fees have rocketed. Everyone is paying more VAT. But austerity seems much less austere if you are old. Pensioners, who fared notably well in the boom years, have been coddled in the bust.

1988

1989

1990

# Fig 008

$\text{Miss}(\theta.01)$   
 $\alpha < -$

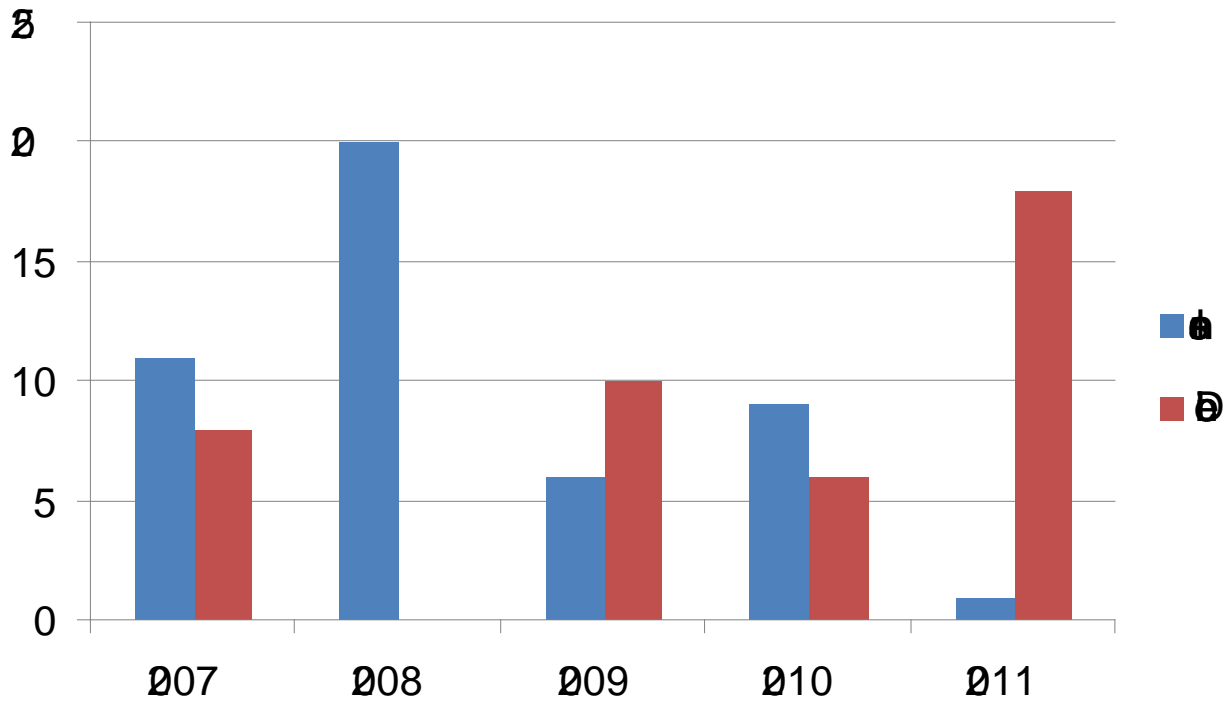




Fig. 10. The evolution of the average number of children per woman in the European Union (2005 - 2011)

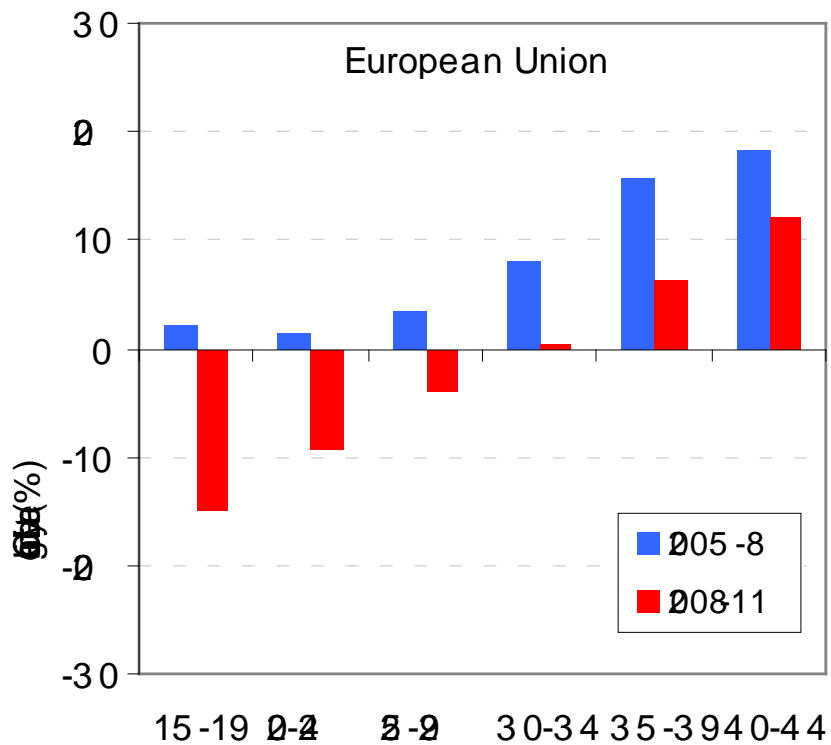
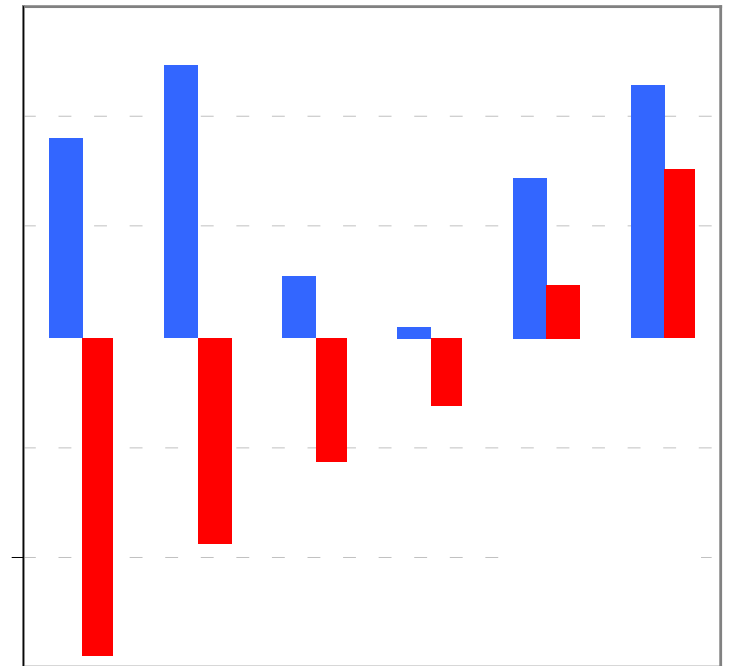
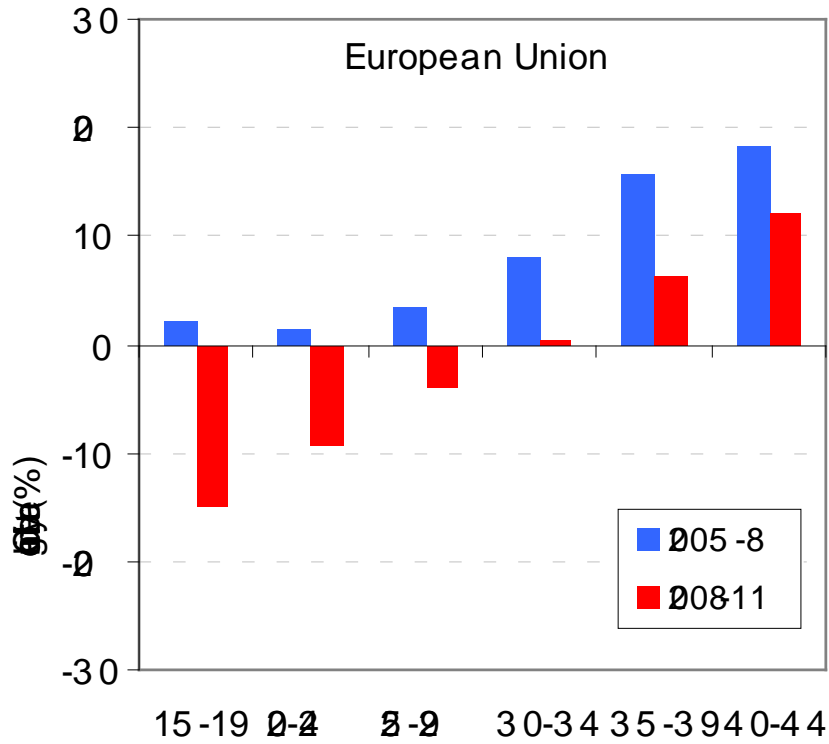




Fig. 8.11 (a) **European Union**  
 (b) **European Union** (2005 - 11)  
 (c) **European Union** (2008 - 11)



---

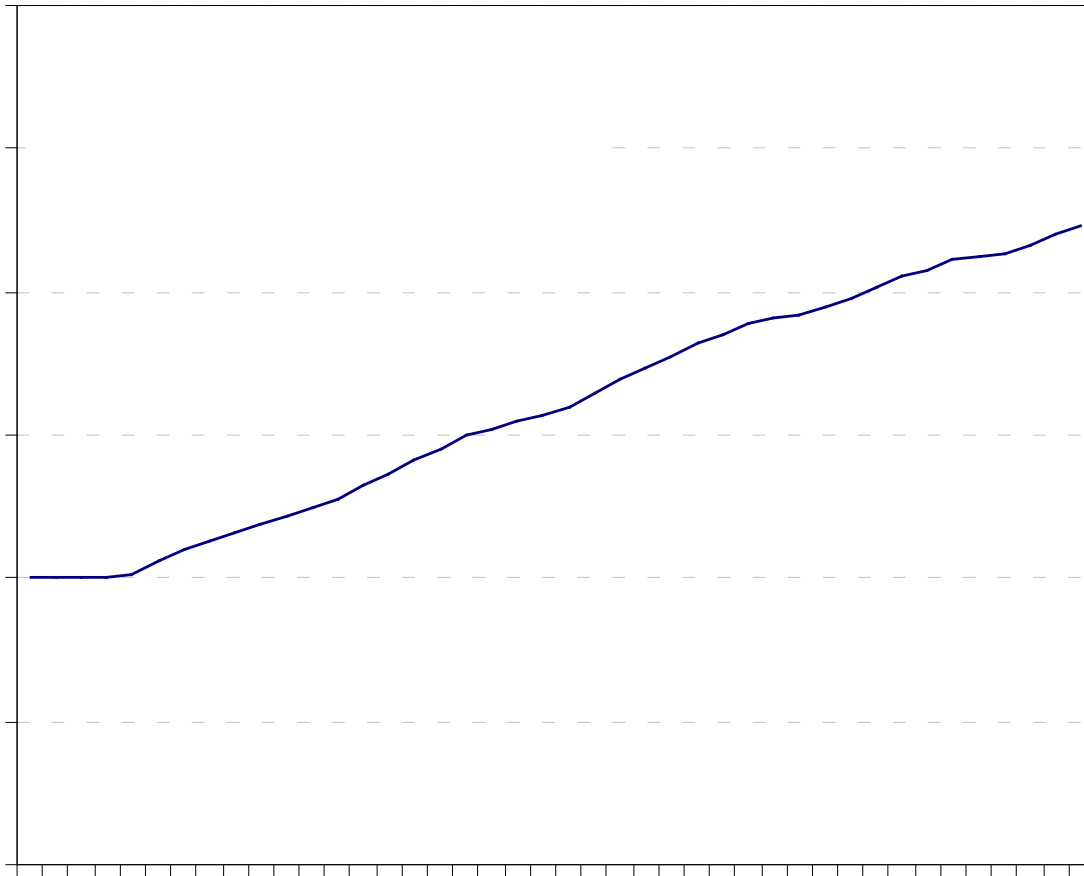
BRUNNEN

1987



g  
g

~~100%~~  
100%



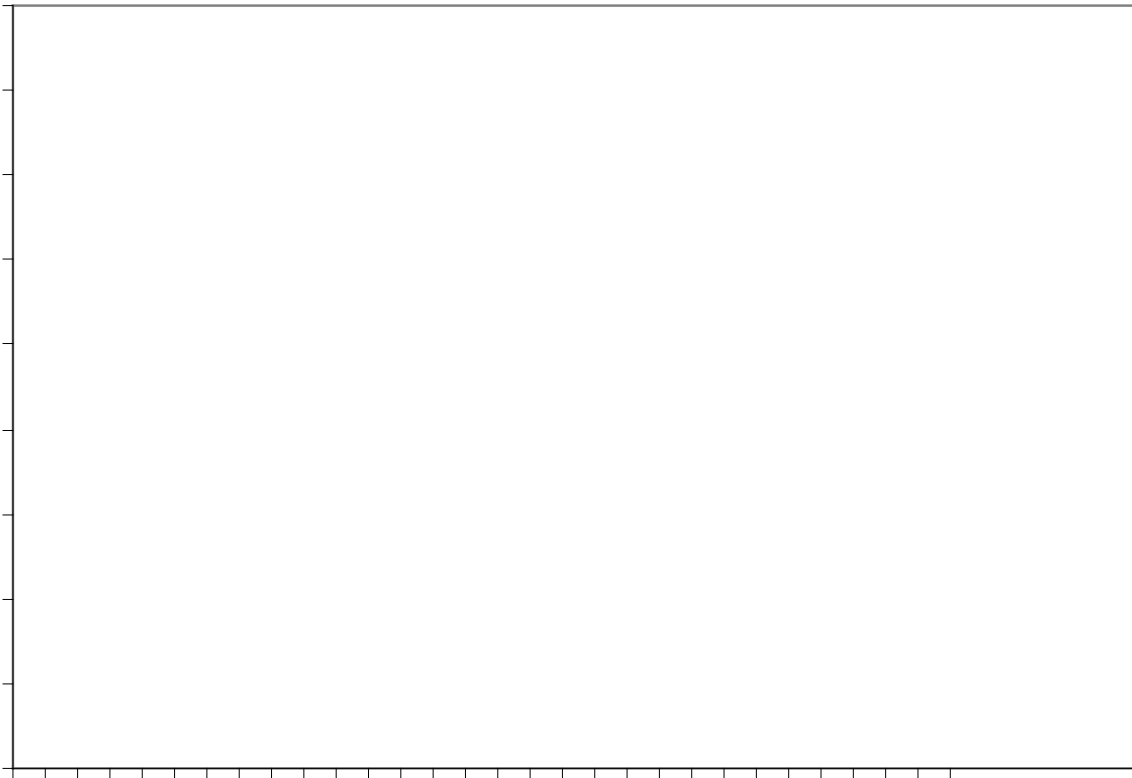
g  
p

1975 - 2011

1975 - 2011

1975 - 2011

1975 - 2011



# Trips

---

- ~~Trips~~

b - ~~trip~~ ~~Return~~

of 1990s - 2000s

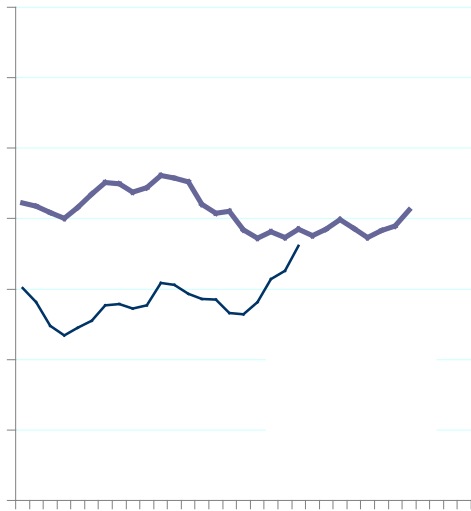
- ~~As~~ - ~~trip~~

was (2004, 2009)

- ~~English~~

on ~~trip~~

平均 中 用(日)  
2006; 2012



---

ER R

ER



- ~~Östra~~ (R) (R)
- ~~Östra~~ 1970 (M  
ta 013, Ra 013)
- ~~Östra~~  
i A
- ~~Östra~~ 1975 b  
b 21 i 204 i 2025

ä

1.4 i 1.4.6 i



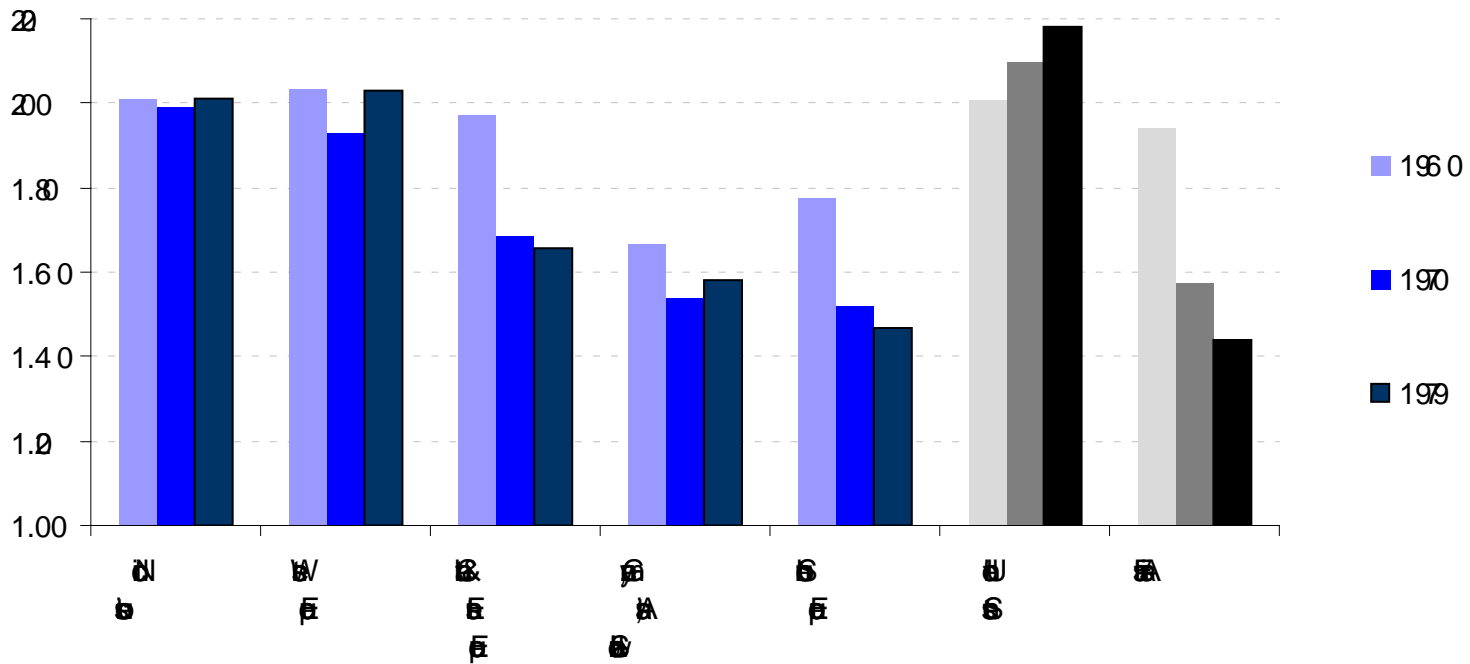
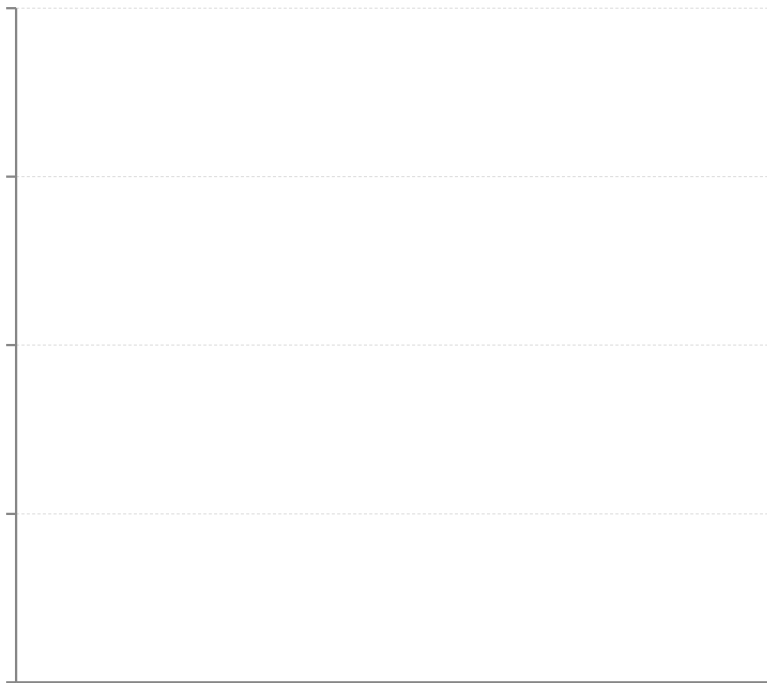


Table 196 8

Completed fertility at 1.80 or higher	Country	Share of women with				CTFR
		No children	1 child	2 children	3+ children	
2018	Algeria	11.6	14.6	42.2	31.7	2.04
2018	Algeria	0	14	38	2	1.91
2018	Algeria	7.9	19.5	53.6	19.0	1.89
Completed fertility below 1.70						
2018	Algeria	7.9	40.2	39.4	12.5	1.62
2018	Algeria	2.5	28	38.0	17.8	1.59
2018	Algeria	16.8	21	44.1	11.0	1.52

- ~~Algeria~~
- ~~Algeria~~

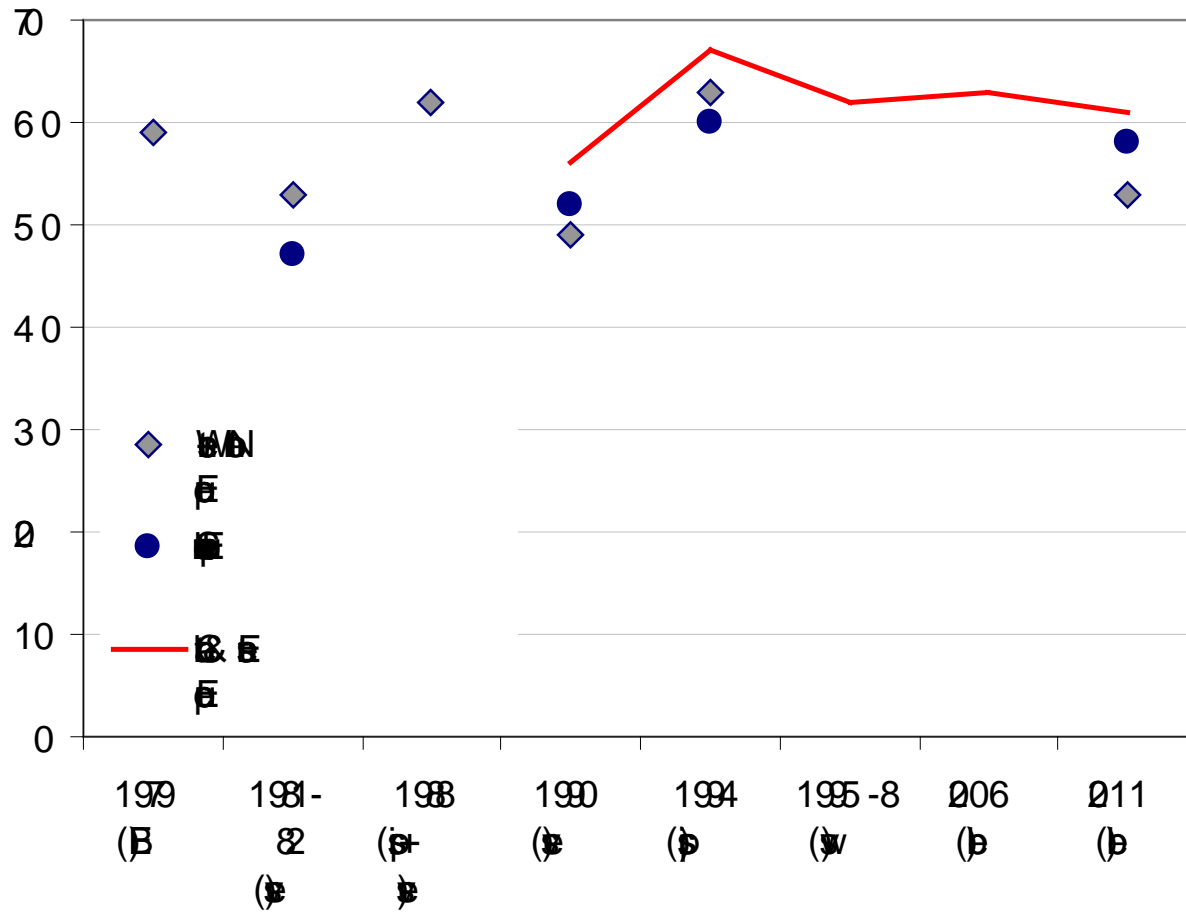


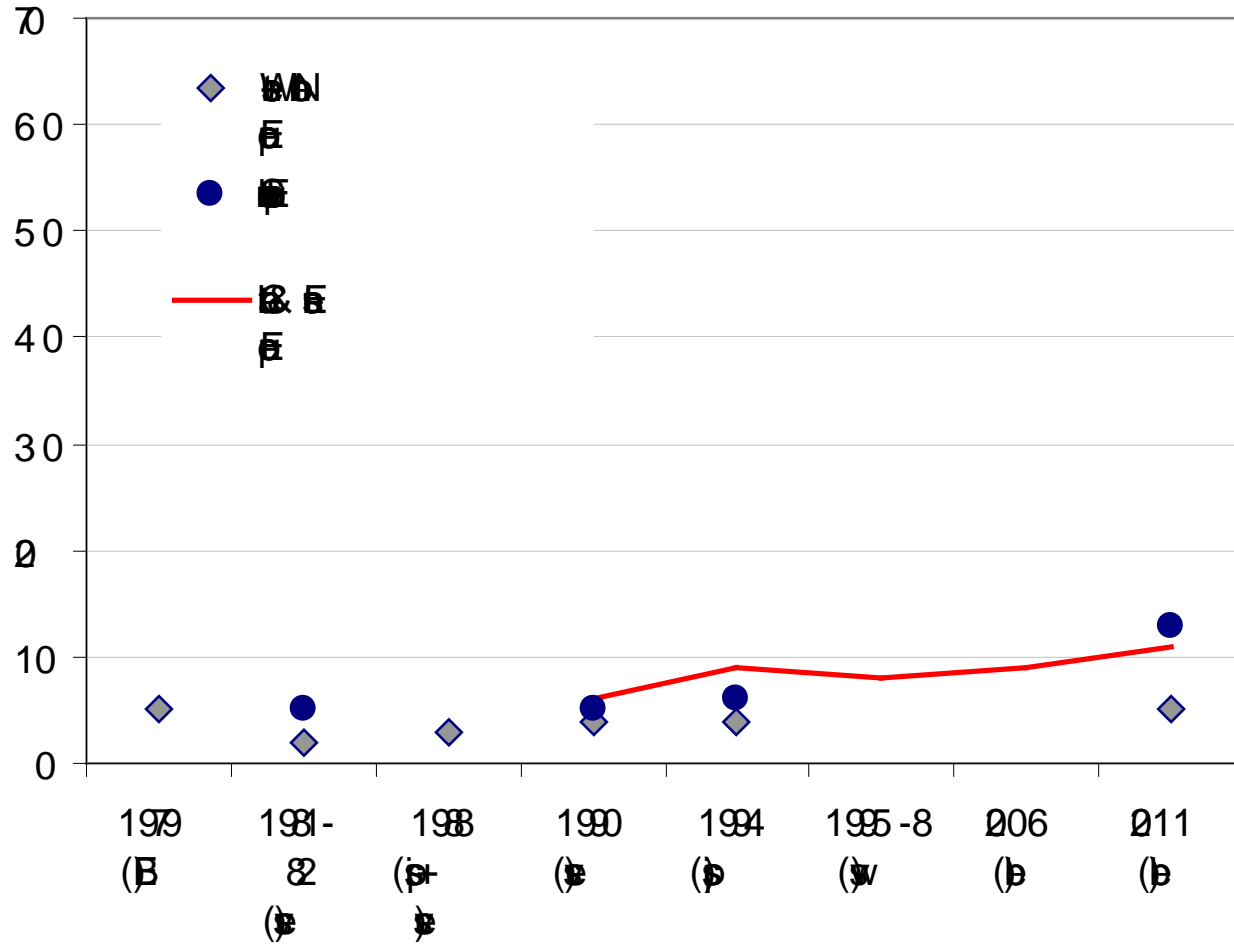


• 地

事







- ~~Wallerstein~~  
~~Wallerstein~~  
~~(1987)~~ (2003)

~~Wallerstein~~ (2005: 12)

...“there is a remarkably pervasive desire (and supporting norms, structure, and biological predisposition) for two children when and if one can afford them and care for them”

|

|





8



# 1990s

1990s-2000s  
1990s-2000s

- 1990s-2000s

- 1990s-2000s

- 1990s-2000s

- 1990s-2000s

3/4

3/4

# FFFS

- Sub  
tion (je

- 100% b



---

11/13

11/13



BS.TSKZ013.

11/13

Working Paper 5/013

VID

# Agrib 011

---

- ~~1000~~  
~~100~~
- Low Fertility Module: 186 ~~1000~~  
~~100~~
- ~~5~~ ~~1000000~~  
~~1050~~
- ~~10~~ ~~1000000~~  
~~1000000~~

1









En

~~W/F~~

- ~~Friday 21~~
- ~~Op~~ - ~~En~~
- ~~W/F~~

~~L~~

- ~~W/F~~
-

~~Wasser~~  
~~Wasser~~  
~~Wasser~~

Wasser

~~Wasser~~

~~Wasser~~  
~~Wasser~~  
~~Wasser~~

~~Wasser~~

~~Wasser~~  
~~Wasser~~  
~~Wasser~~

~~Wasser~~

~~Wasser~~      ~~Wasser~~

~~Wasser~~ + 1

~~Wasser~~      ~~Wasser~~

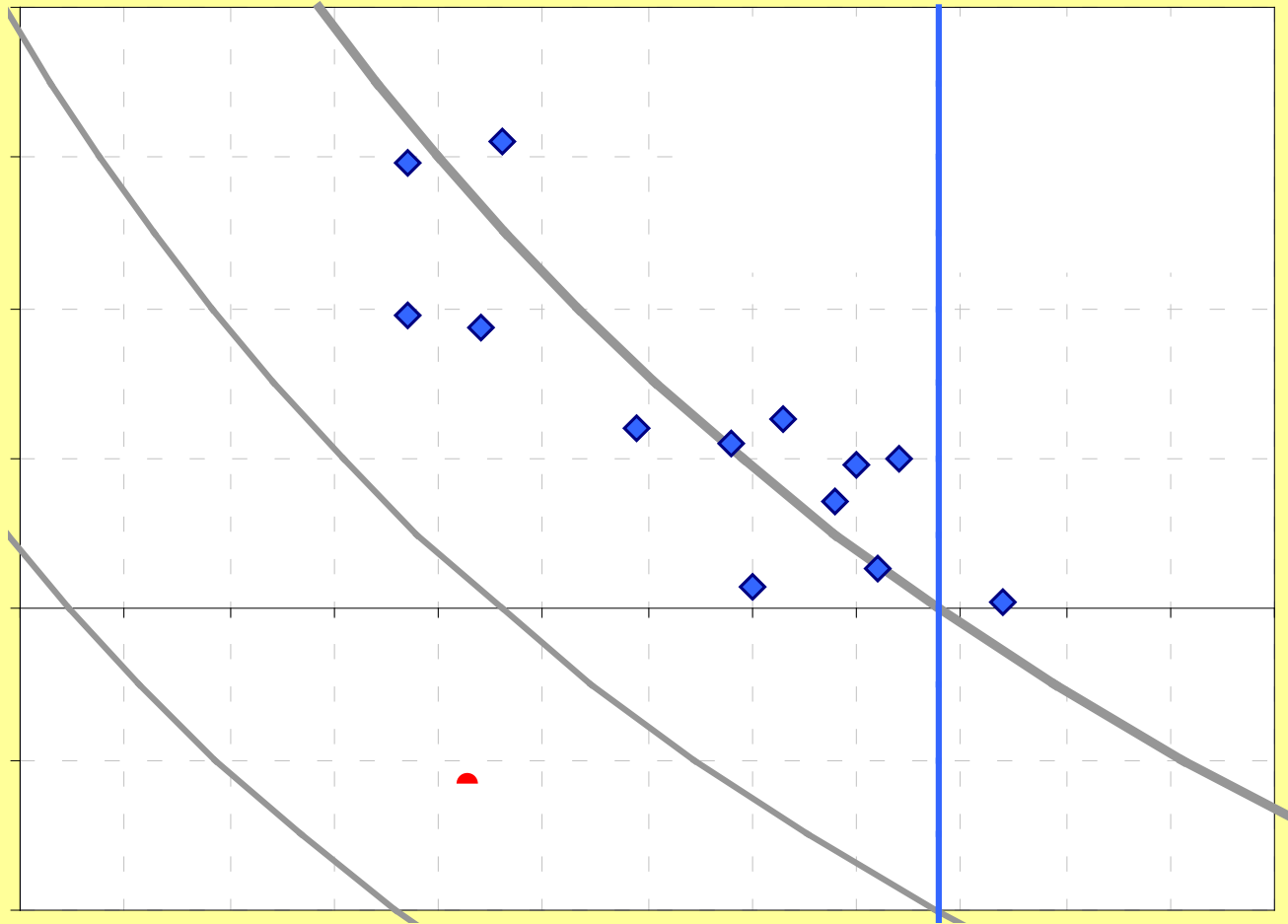
~~Wasser~~

~~Wasser~~

~~Wasser~~

~~Wasser~~

Abbildung  
15-30) von 1975



- Η “Εύρημα” είναι  
“Εύρημα” είναι  
Εύρημα

f (2013) and others: Εύρημα  
Εύρημα  
2012



Gap in  
GDP

1980s - 2000s

- in 1980s

6 young men. 1980s

-6 (2010):

No country for



- ~~First~~  
from the bottom or increase at the top?
- ~~Multiple~~  
~~by~~
- ~~A~~ "a" ~~dis~~
- ~~Step~~

reduction



100

100

100

100

100

100

100

100

100

100