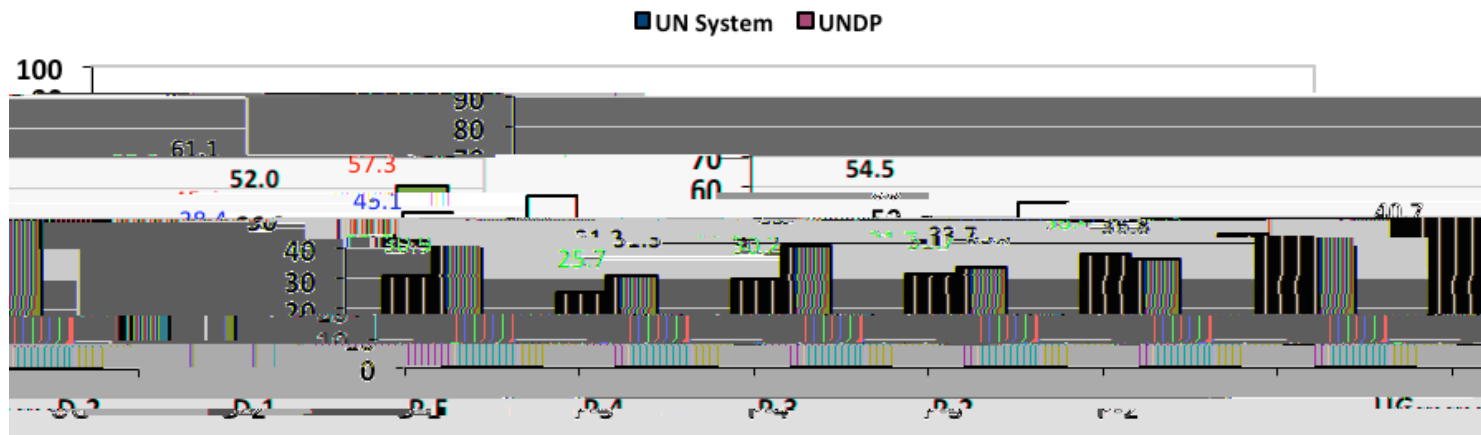


(from 1 January 2001 to 31 December 2010)

THE UNITED NATIONS SYSTEM	UNDP
---------------------------	------

**Percentage comparison of women in the professional and higher categories with appointments of one year or more in the United Nations system and UNDP December 2010**



\*Source: CEB Table 11 –31 December 2010

\*30 of 31 entities submitted data

\*\*UG stands for “Ungraded” and combines the ranks of Secretary-

As of 31 December 2010, women **in the UN system** constituted:  
**40.3%** (12,005 out of 29,763) of all staff in the professional and higher categories with appointments of one year or more(UG-P2)  
**29.3%** (784 out of 2,674) of all staff at the **D-1 level and above**(UG-D1)  
**41.4%** (11,221 out of 27,089) of all staff at the **P level**(P5-P2)

**Gender balance** has only been achieved at the **P-2 level**(57.3%).

\*Source: CEB Table 11 –31 December 2010

As of 31 December 2010, women **in UNDP** constituted:  
**42.1%** (1037 out of 2465) of all staff in the professional and higher categories with appointments of one year or more(UG-P2)  
**39.0%** (140 out of 219) of all staff at the **D-1 level and above**(UG-D1)  
**42.6%** (897 out of 2106) of all staff at the **P level**(P5-P2)

**Gender balance** has only been achieved or exceeded at the **UG level**(54.5%), **P-3level**(52.0%), **P2level**(61.1%).

\*Source: CEB Table 11 –31 December 2010

