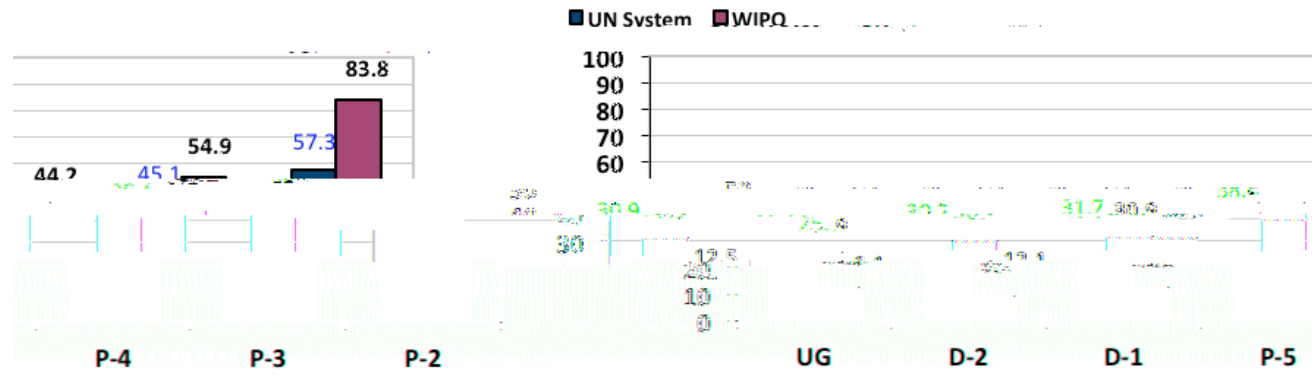


UN W men

The Status of Women in the United Nations System and WIPO

Percentage comparison of women in the professional and higher categories with appointments of one year or more in the United Nations system and WIPO(Dec 2010)



As of 31 December 2010, women **in the UN system** constituted:

- **40.3%** (12,005 out of 29,763) of all staff in the professional and higher categories with appointments of one year or more.
- **22.7%** (784 out of 2,674) of all staff at the **D-1 level and above**.
- **29.3%** (11,221 out of 27,089) of all staff at the **P level**;

Gender balance has only been achieved at the **P-2 (57.3%) level**.

Largest increase: UG (**15.2%** from 15.6% in Dec 2001 to 30.9% in Dec 2010)

Smallest increase: P-2 (**4.0%** from 53.3% in Dec 2001 to 57.3% in Dec 2010)

As of 31 December 2010, women **in WIPO** constituted:

- **43.3%** (206 out of 475) of all staff in the professional and higher categories with appointments of one year or more.
- **11.5%** (6 out of 52) of all staff at the **D-1 level and above**.
- **47.3%** (200 out of 423) of all staff at the **P level**.

Gender balance has only been achieved or exceeded at P3(54.9%)level, P2(83.8%)level.

Largest increase: P2(**37.6%** from 46.2% in Dec. 2001 to 83.8% in Dec. 2010)

Largest decrease

